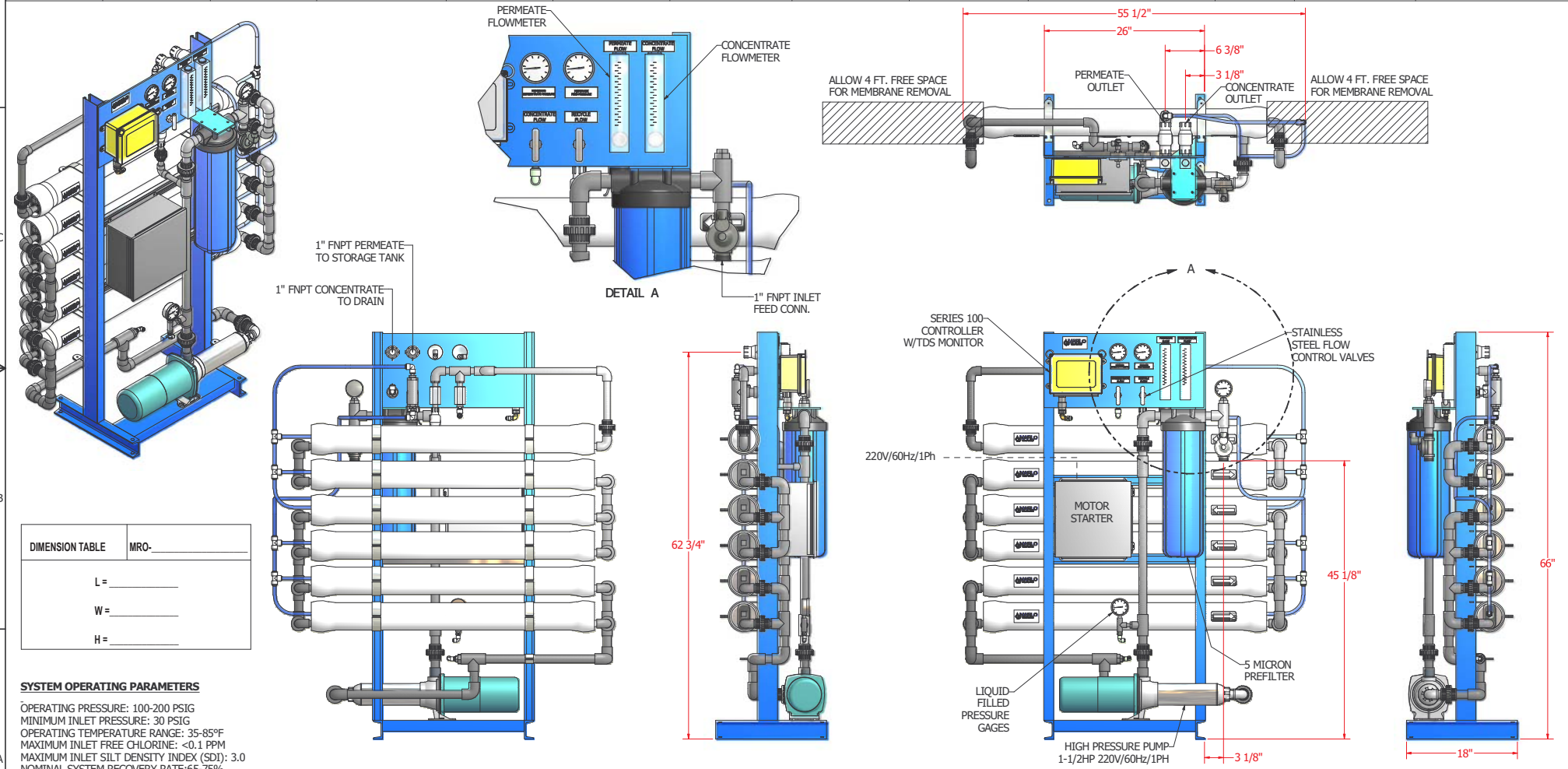


MODEL NO.	PERMEATE GPM	PERMEATE GPD	ELEMENT QUANTITY	RO FEED (GPM)	RO REJECT (GPM)	INLET FEED CONN.	PERMEATE CONN.	RO REJECT CONN.	NOMINAL OPERATING PRESSURE	PUMP HP	APPROX. SHIP WT.	APPROX. OPERATING WT.
MRO-10800-4-LP	7.5	10,800	6	10-11.5	2.5-4	1" FNPT	1" FNPT	1" FNPT	125 PSI	1.5	650 LBS	575 LBS
MRO-12600-4-LP	8.8	12,600	7	11.7-13.5	2.9-4.7	1" FNPT	1" FNPT	1" FNPT	125 PSI	1.5	700 LBS	625 LBS
MRO-14400-4-LP	10	14,400	8	13.3-15.4	3.3-5.4	1" FNPT	1" FNPT	1" FNPT	125 PSI	1.5	750 LBS	675 LBS
MRO-16200-4-LP	11.3	16,200	9	15-17.4	3.7-6.1	1" FNPT	1" FNPT	1" FNPT	125 PSI	1.5	800 LBS	725 LBS



DIMENSION TABLE	MRO-
L =	_____
W =	_____
H =	_____

SYSTEM OPERATING PARAMETERS

OPERATING PRESSURE: 100-200 PSIG
 MINIMUM INLET PRESSURE: 30 PSIG
 OPERATING TEMPERATURE RANGE: 35-85°F
 MAXIMUM INLET FREE CHLORINE: <0.1 PPM
 MAXIMUM INLET SILT DENSITY INDEX (SDI): 3.0
 NOMINAL SYSTEM RECOVERY RATE: 65-75%
 NOMINAL SYSTEM TDS REJECTION: 95-99%
 ELECTRICAL REQUIREMENTS: 240VAC/1 PHASE/60Hz
 OPERATIONS AND PERFORMANCE BASED ON INLET FEED OF SOFTENED WATER OF 500 PPM AT 77°F

REVISIONS		
NO.	DATE	REVISIONS



MRO-4-LP-EXT RO UNIT (SHOWN) GENERAL ARRANGEMENT			
FRAC. & DEC. #	FILE NO.	SCALE	SHEET 1 OF 1
DRN. AGG			
APP'D.	DATE: 4/24/2007	DRAWING NO.	REV.
		LP-SERIES EXT	