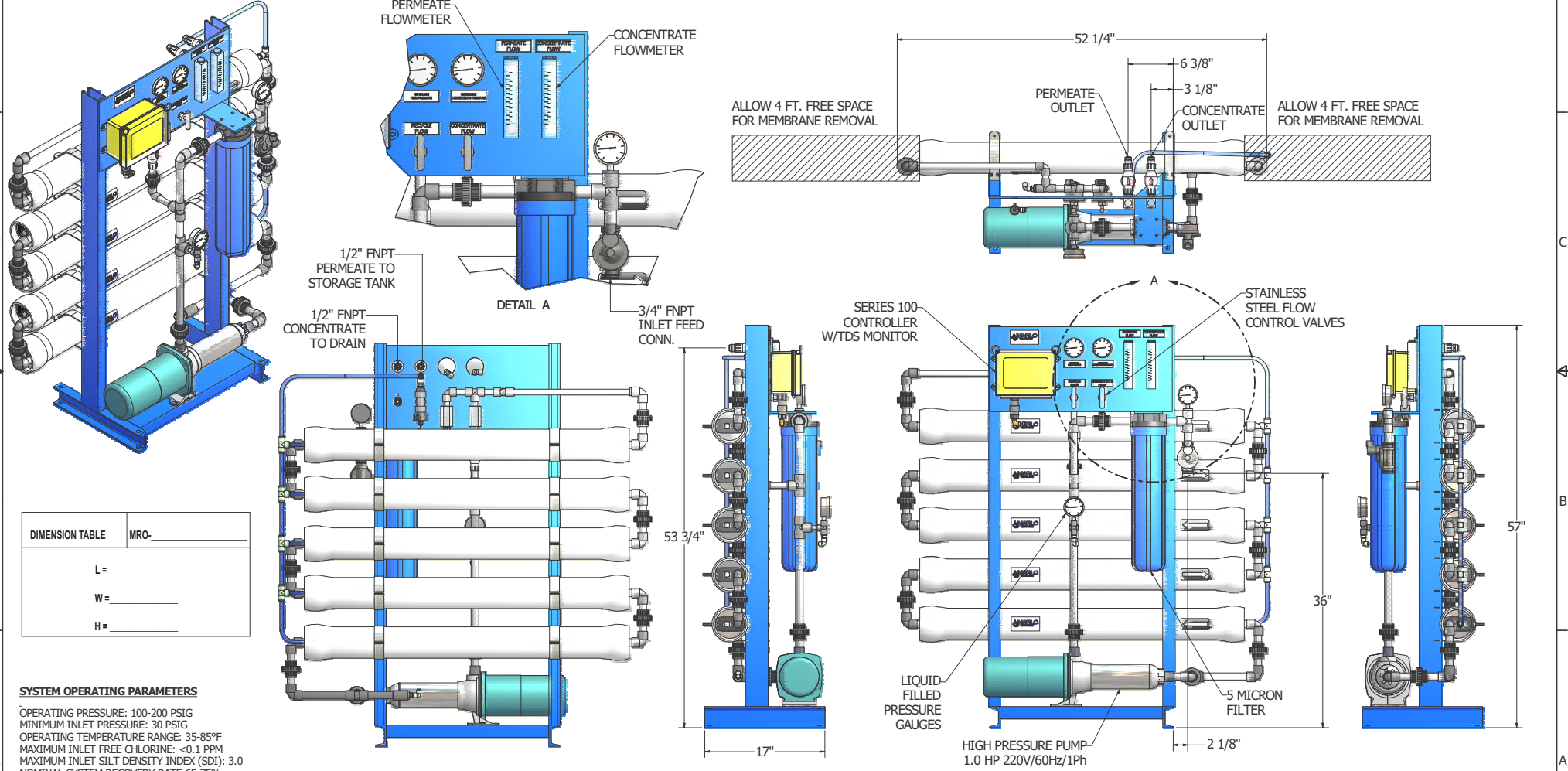


MODEL NO.	PERMEATE GPM	PERMEATE GPD	ELEMENT QUANTIT	RO FEED (GPM)	RO REJECT (GPM)	INLET FEED CONN.	PERMEATE CONN.	RO REJECT CONN.	NOMINAL OPERATING PRESSURE	PUMP HP	APPROX. SHIP WT.	APPROX. OPERATING WT.
MRO-3600-4-LP	2.5	3600	2	3.3-3.8	0.8-1.3	3/4" FNPT	1/2" TUBE	1/2" TUBE	125	1	425 LBS	375 LBS
MRO-5400-4-LP	3.8	5400	3	5.0-5.8	1.2-2.0	3/4" FNPT	1/2" TUBE	1/2" TUBE	125	1	475 LBS	425 LBS
MRO-7200-4-LP	5.0	7200	4	6.7-7.7	1.7-2.7	3/4" FNPT	1/2" TUBE	1/2" TUBE	125	1	525 LBS	475 LBS
MRO-9000-4-LP	6.3	9000	5	8.4-9.7	2.1-3.4	3/4" FNPT	1/2" TUBE	1/2" TUBE	125	1	575 LBS	525 LBS



DIMENSION TABLE	MRO-
L =	_____
W =	_____
H =	_____

SYSTEM OPERATING PARAMETERS
 OPERATING PRESSURE: 100-200 PSIG
 MINIMUM INLET PRESSURE: 30 PSIG
 OPERATING TEMPERATURE RANGE: 35-85°F
 MAXIMUM INLET FREE CHLORINE: <0.1 PPM
 MAXIMUM INLET SILT DENSITY INDEX (SDI): 3.0
 NOMINAL SYSTEM RECOVERY RATE: 65-75%
 NOMINAL SYSTEM TDS REJECTION: 95-99%
 ELECTRICAL REQUIREMENTS: 240VAC/1 PHASE/60Hz
 OPERATIONS AND PERFORMANCE BASED ON INLET FEED OF SOFTENED WATER OF 500 PPM AT 77°F

REVISIONS			
NO.	DATE	BY	REMARKS



MRO-4-LP RO UNIT (SHOWN) GENERAL ARRANGEMENT			
FRAC #	DEC #	FILE ID	SHEET 1 OF 1
DATE: 4/24/2007	SCALE:	DRAWING NO: LP - SERIES	REV: